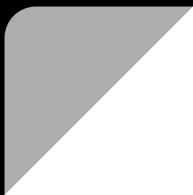




華擎科技 ASRock Inc.

Stock Code 3515



Safe Harbor Statement

Except for historical information contained herein, the matters set forth in this presentation are forward looking statements that are subject to risks and uncertainties that could cause actual results to differ materially, including the impact of competitive products and pricing, timely design acceptance by our customers, timely introduction of new technologies, ability to ramp new products into volume, industry wide shifts in supply and demand for electronic products, industry overcapacity, availability of manufacturing capacity, financial stability in end markets, and other risks.



Company Profile

ASRock Product Line

Consolidated Financial Result

Business Highlight

Q&A





Established : 2002.May.

Capital : NT\$1,206million

Chairman : Tung Hsutien ; GM : Shiu Longloon

Core Business: MB, Server (ASRock Rack), IPC (ASRock Industrial), Mini PC, Graphics Card

Milestones

● Founded

● 2007 IPO

● ASRock Rack
Founded

X299E-ITX/ac

●

● X570 AQUA



2002

2004

2006

2008

2010

2012

2014

2016

2018

2019



● Launch the World's First MB
comply with ROHS

● World's First MB Supporting
Front USB 3.0

● M8 Series



● Fatal1ty Z170 Gaming K4



● ASRock Industrial
Founded

● World's First AMD
Water-Cooled MB



Mini PC
Series



Motherboard
Series



Graphics Card
Series



Server/Workstation
Series



Industrial PC
Series





Profit & Loss

NT\$ million	2019 Q1-Q3	2020 Q1-Q3	YoY
Revenue	9,552	13,513	41%
COGS	(7,838)	(10,670)	36%
Gross Profit	1,714	2,843	66%
Operating Expense	(1,217)	(1,490)	22%
Operating Income	497	1,354	173%
Non-Operating Income (Loss)	27	5	-80%
PBT	524	1,359	159%
Net Income	445	1,139	156%
Net Income Attributable to Stockholders	404	1,006	149%
EPS (NT\$)	3.35	8.34	149%
Gross Margin (%)	18%	21%	
Operating Profit Margin (%)	5%	10%	
Net Profit Margin (%)	5%	8%	
ROE (%)	7%	16%	



Balance Sheet

NT\$ million	2019Q1-Q3		2020 Q1-Q3	
Current Assets				
Cash and Equivalents	1,835	18%	2,979	24%
AR	2,116	21%	2,190	18%
Inventory	4,754	46%	5,824	47%
Total Current Assets	9,833	96%	11,654	95%
Other Assets	451	4%	615	5%
Total Assets	10,284	100%	12,269	100%
Current Liabilities				
AP	2,863	28%	3,758	31%
Total Current Liabilities	3,848	37%	5,166	42%
Total Liabilities	3,915	38%	5,246	43%
Capital	1,207	12%	1,206	10%
Retained Earnings	1,968	19%	2,682	22%
Net Equity	6,369	62%	7,023	57%
Total Liabilities and Net Equity	10,284		12,269	
Book Value Per Share (NT\$)	50.83		54.93	

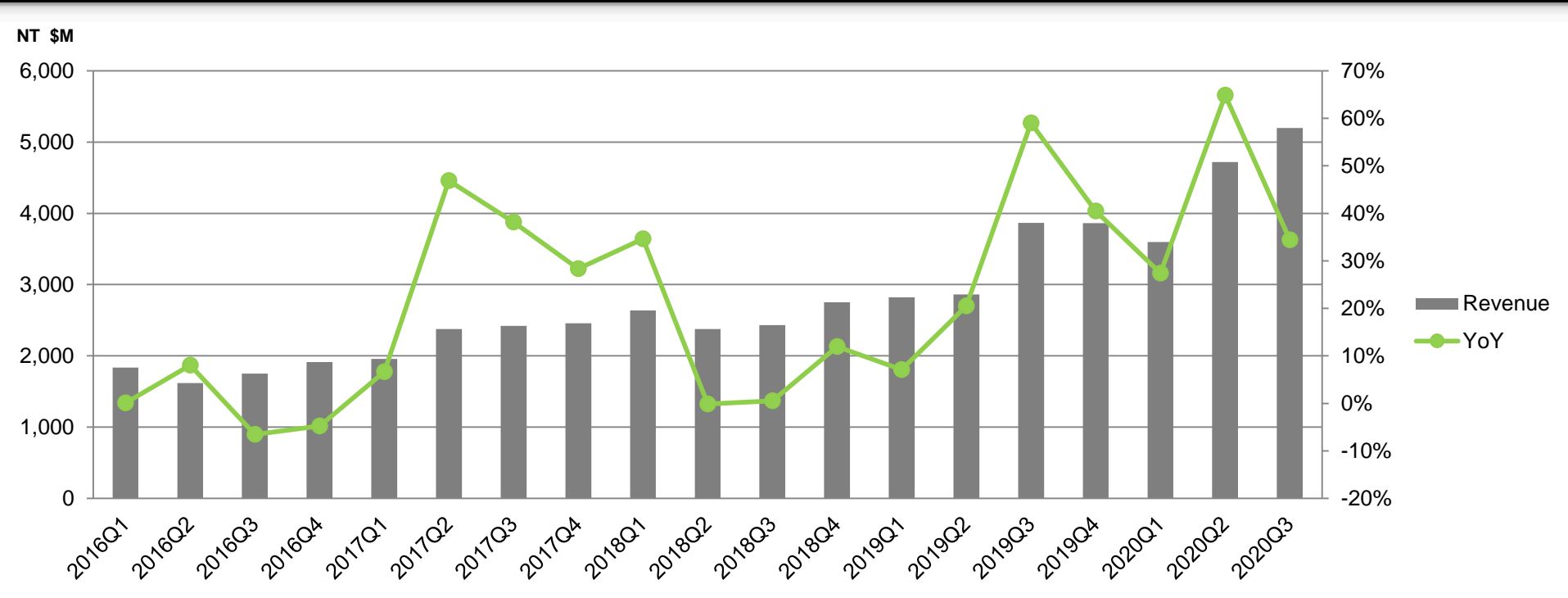


Statement of Cash Flows

NT\$ million	2019 Q1-Q3	2020 Q1-Q3
Cash Flows from Operating Activities		
PBT	524	1,359
(Increase) Decrease in Accounts Receivable	(471)	(577)
(Increase) Decrease in Inventory	207	(833)
Increase (Decrease) in Accounts Payable	712	1,221
Net Cash Provided (Used) by Operating Activities	853	1,265
Cash Flows from Investing Activities		
Acquisition of Financial Assets at Amortized Cost	(244)	305
Net Cash Provided (Used) by Investing Activities	(235)	293
Cash Flows from Financing Activities		
Cash Dividends Paid	(483)	(483)
Net Cash Provided (Used) by Financing Activities	(497)	(504)
Effect of Exchange Rate Changes	39	(111)
Net Increase (Decrease) in Cash	160	943
Cash, Beginning of the Period	1,675	2,036
Cash, End of the Period	1,835	2,979

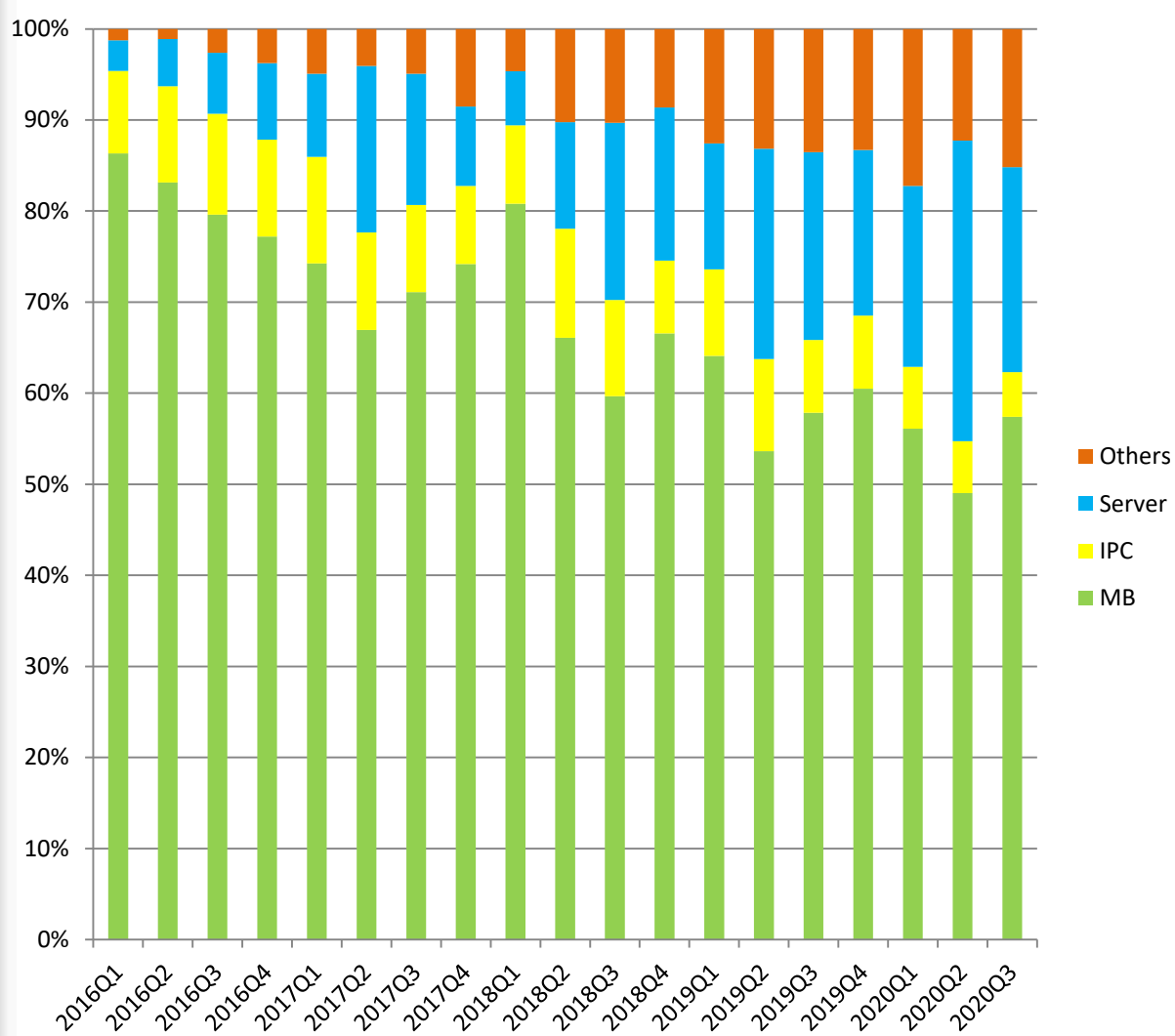


Consolidated Revenue Trend



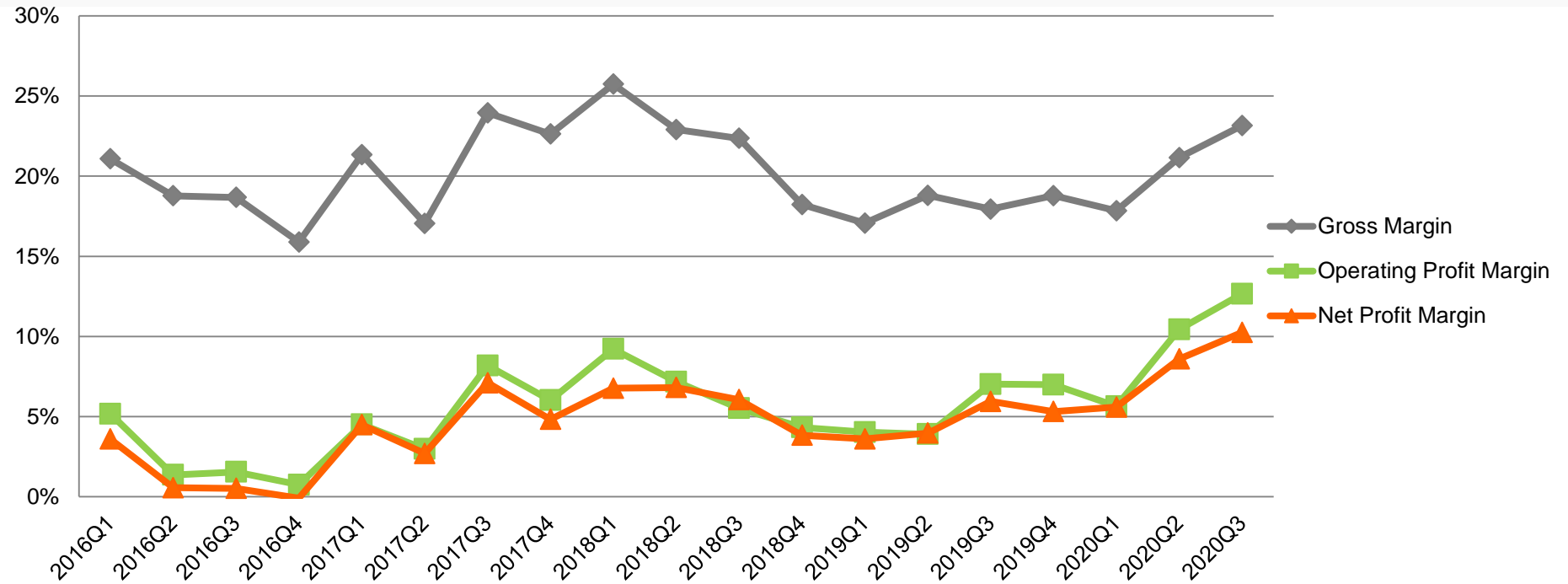


Revenue Breakdowns by Products





Margin Trend



The ASRock logo is positioned in the top-left corner of the image. It features the brand name in a bold, green, sans-serif font with a small registered trademark symbol (®) to the upper right of the 'k'. The background of the entire image is a dark, high-angle photograph of a city skyline at dusk or dawn, with the Empire State Building prominently lit in the center.

ASRock®

Q & A