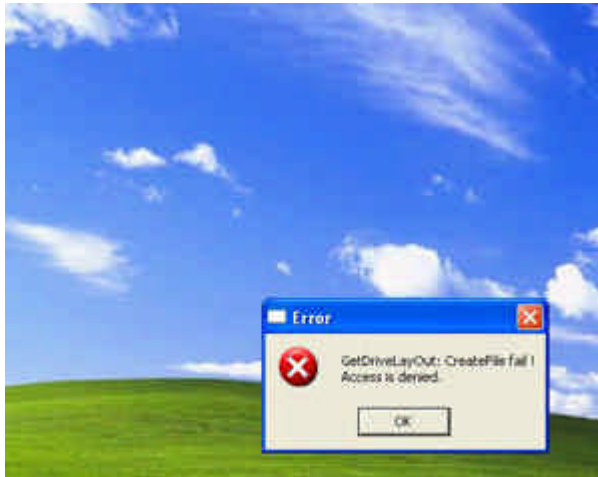


## ***Technical Reference - Q&A***

1. **Q:** I am using P4Dual-915GL/ 775Dual-915GL. After updating the VGA driver from 6.14.10.3943 to 6.14.10.4299, the maximum memory allocated for graphics became 192MB. Why?

**A:** The capacity of maximum memory allocated for graphics is controlled by Intel VGA driver. The Intel VGA driver-6.14.10.4299 only supports the maximum memory allocated for graphics 192MB.

2. **Q:** My motherboard is P4VM800/ 775VM800/ P4V88+/ 775V88+/ P4Dual-880Pro/ 775Dual-880Pro/ K8Upgrade-VM800. I used it with SATA hard drive with RAID condition under Windows XP. If I log on with a limited user account, the system will show an error (see below picture), what should I do?



**A:** Please refer to our download site to download the latest VIA RAID driver. This new released driver can solve this problem.

P4VM800: <http://www.asrock.com/mb/Download.asp?Model=P4VM800>

775VM800: <http://www.asrock.com/mb/Download.asp?Model=775VM800>

P4V88+: <http://www.asrock.com/mb/Download.asp?Model=P4V88%2b>

775V88+: <http://www.asrock.com/mb/Download.asp?Model=775V88%2b>

P4Dual-880Pro:

<http://www.asrock.com/mb/Download.asp?Model=P4Dual-880Pro>

775Dual-880Pro:

<http://www.asrock.com/mb/Download.asp?Model=775Dual-880Pro>

K8Upgrade-VM800:

<http://www.asrock.com/mb/Download.asp?Model=K8Upgrade-VM800>

