

1. Q: I would like to install two memory modules for dual channel on Beebox, how am I supposed to choose the memory?

A: For building a 2 DIMMs or dual channel configuration, users are required to install identical (the same brand, speed, size and chip-type) DDR3L SO-DIMMs.

2. Q: How do I reinstall Windows 10 Home 64-bit on a N3150/3050-NUC (Beebox with OS) and activated the OS?

A: Please refer to the following link to download and install Windows 10 Home 64-bit on Beebox.

http://answers.microsoft.com/en-us/windows/wiki/windows_10-windows_install/how-to-download-official-windows-10-is-o-files/35cde7ec-5b6f-481c-a02d-dadf465df326

After installing the OS, follow the steps below to activate Windows 10 Home 64-bit.

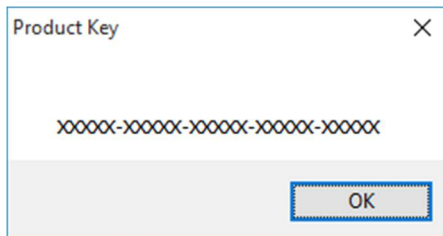
1. Download the "AsrProductKey" tool.

<http://www.asrock.com/nettop/Intel/Beebox%20Series/?cat=Download&os=Win1064>

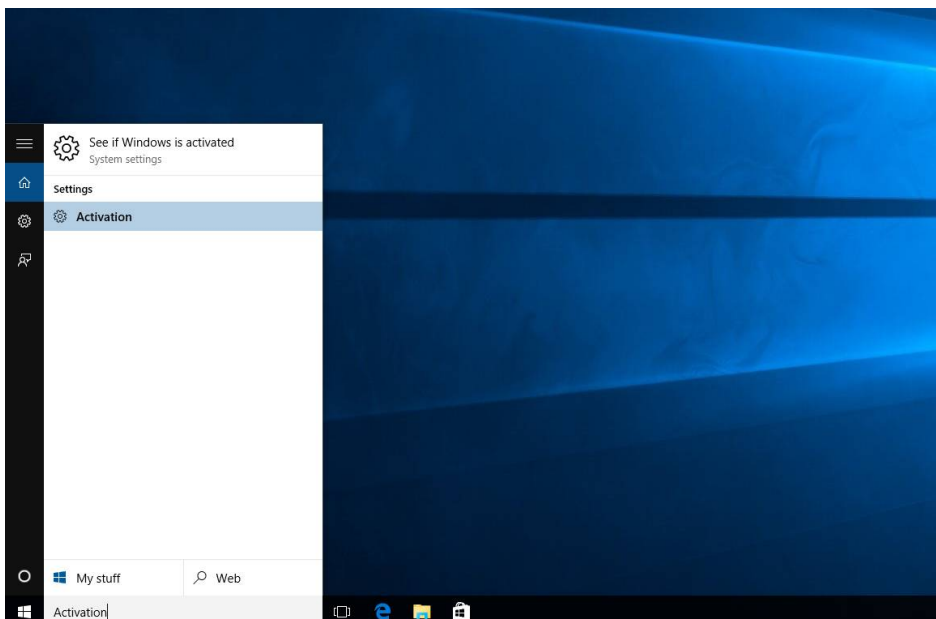
2. Unzip the tool and launch it.



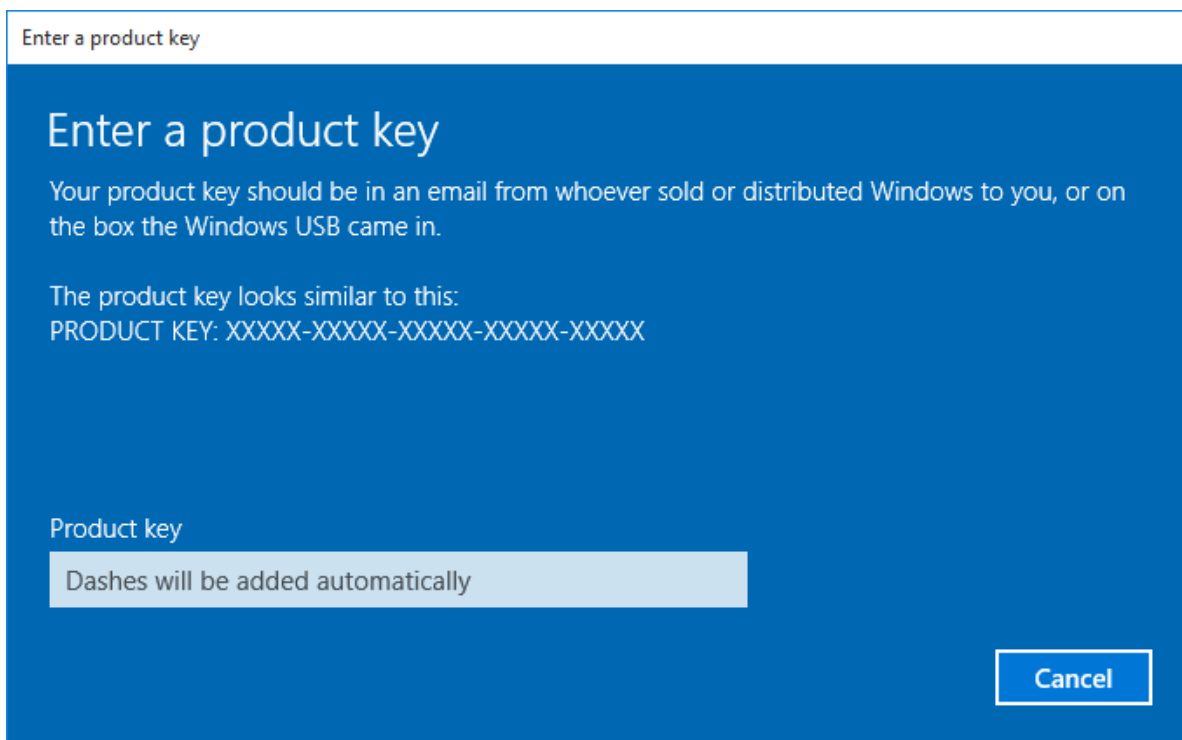
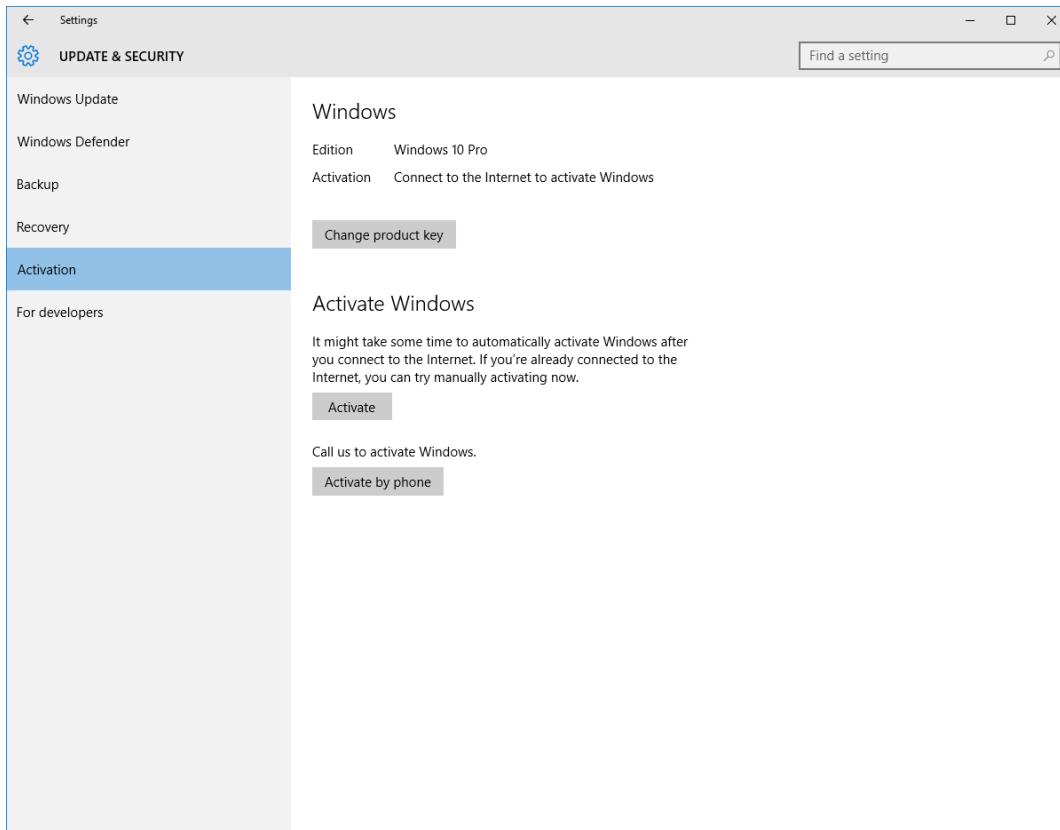
3. You will receive the product key of your system as shown below.



4. Type "Activation" on Windows search and press enter.



5. Click "Change Product Key" and enter the key which was displayed at step3.

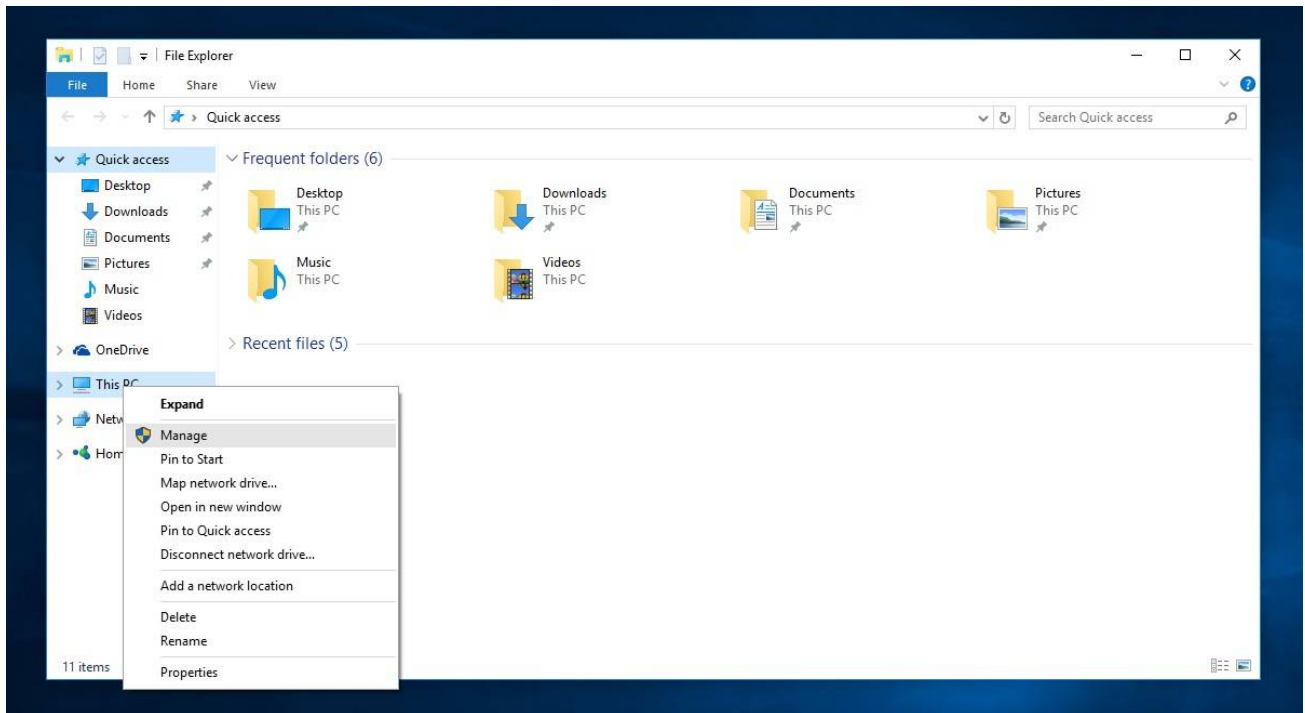


6. After entering the Product Key, the OS will be activated.

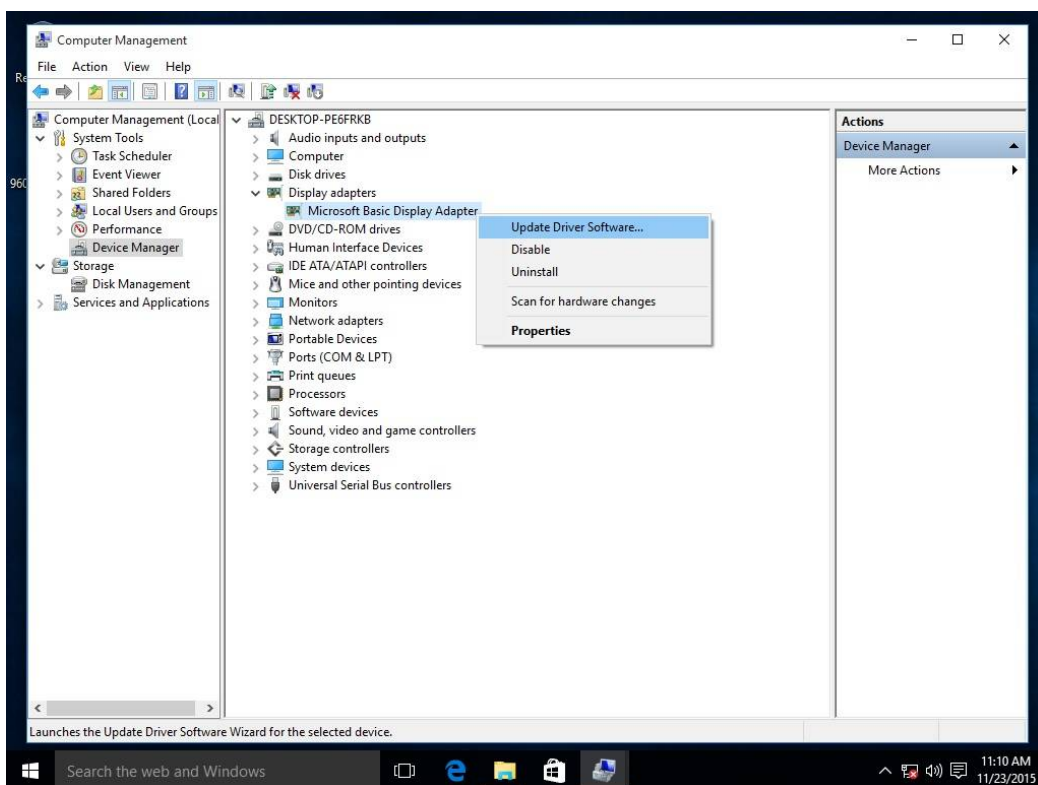
3. Q: There is no Windows 10 VGA driver for AMD 760G platform on your website, where can I find the driver and install it?

A: Please refer to the steps below to install the VGA driver with Windows update.

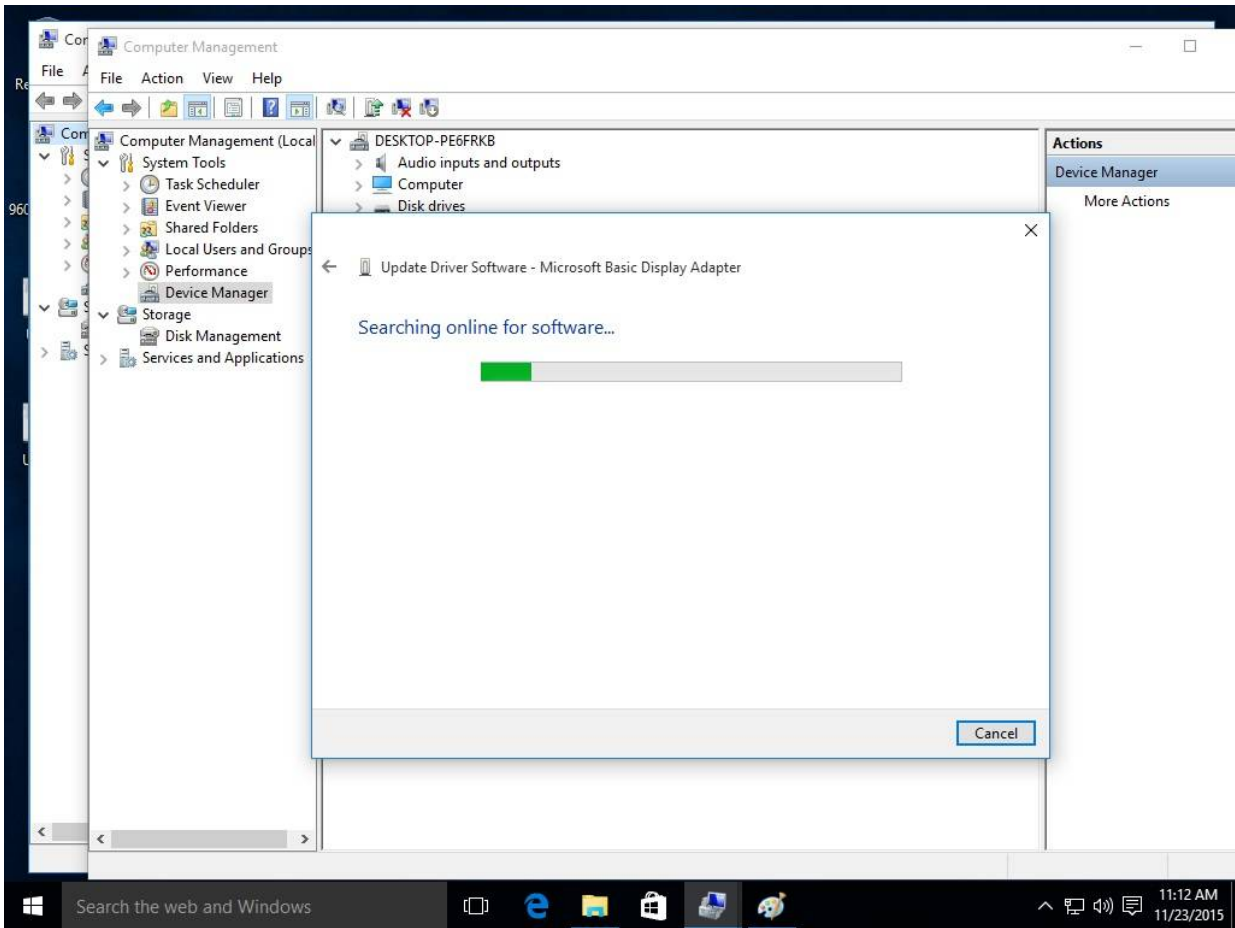
Step1. Right click "This PC" to enter "Manage".



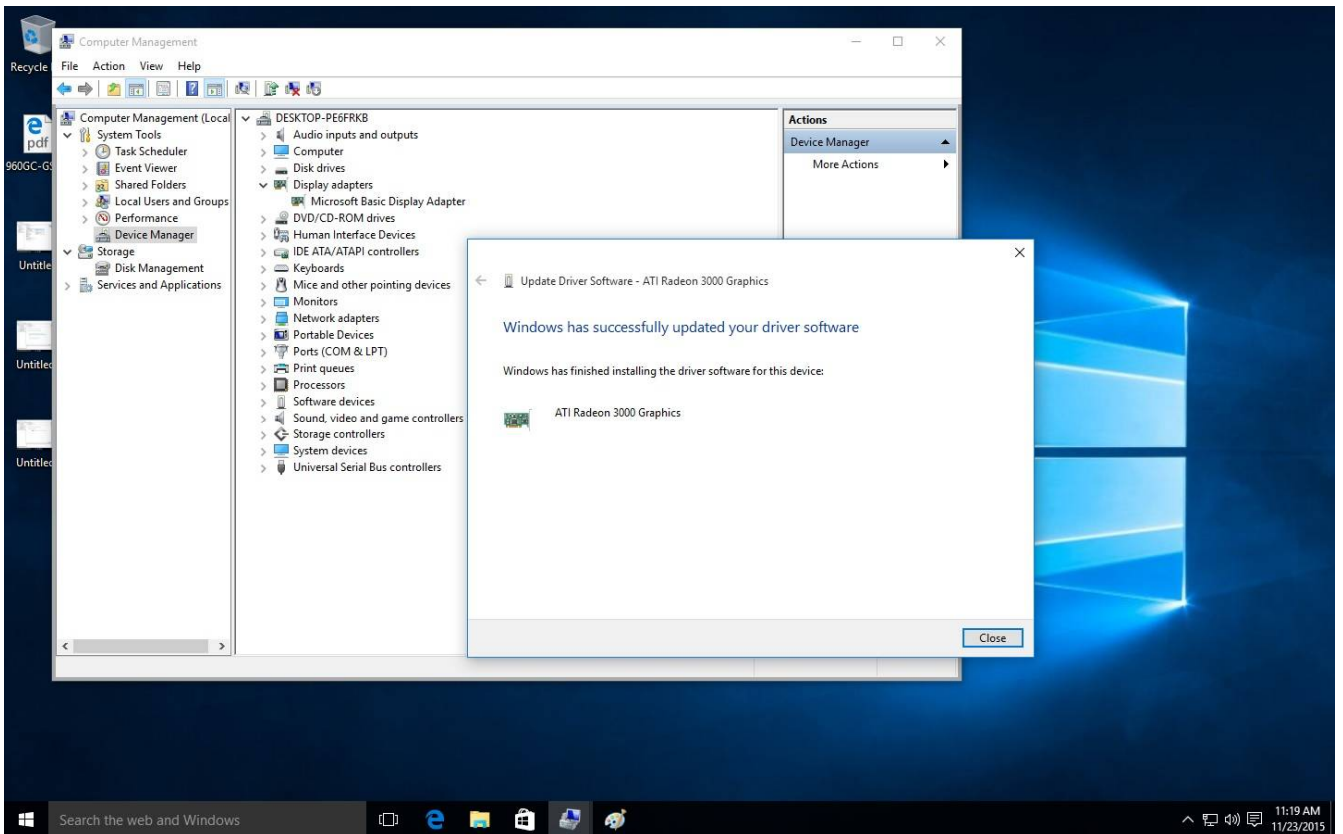
Step2. Choose "Device Manager" on the left; enter "Display adapters" then right click on "Microsoft Basic Display Adapter" and then select "Update Driver Software..." (Please make sure the system is connected to the Internet)



Step3. The system will update the driver via Internet automatically.



Step4. Wait till it displays Windows has successfully updated your driver software.



Step5. After this driver update, the Device Manager should be able to recognize your VGA adapter.

