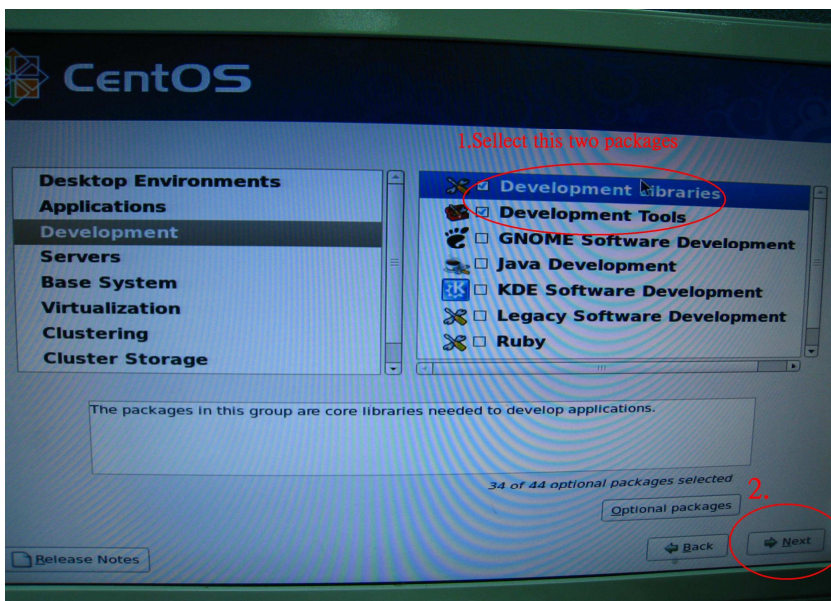
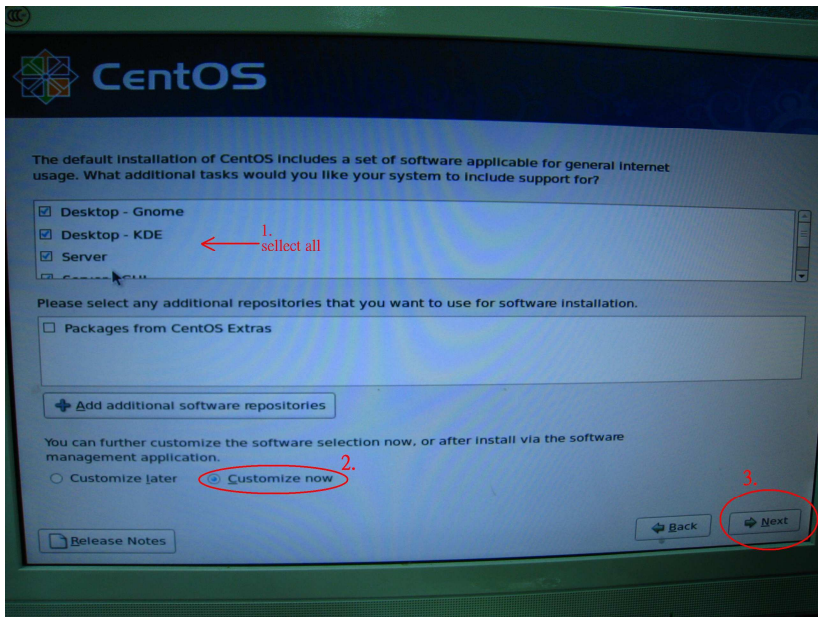


Technical Reference - Q&A

1. Q: I want to install Linux CentOS 5.2 on X58SuperComputer. After start the installation of CentOS 5.2, the system stays on checking hardware device. I cannot continue the Linux installation, what can I do?

A: Please follow below steps to install your Linux CentOS 5.2 installation.

1. Disable the Onboard LAN 1 and Onboard LAN 2 in BIOS setting.
2. Enter Boot menu and starting the Linux CentOS 5.2 installation.
3. Please install the system packages like below picture.



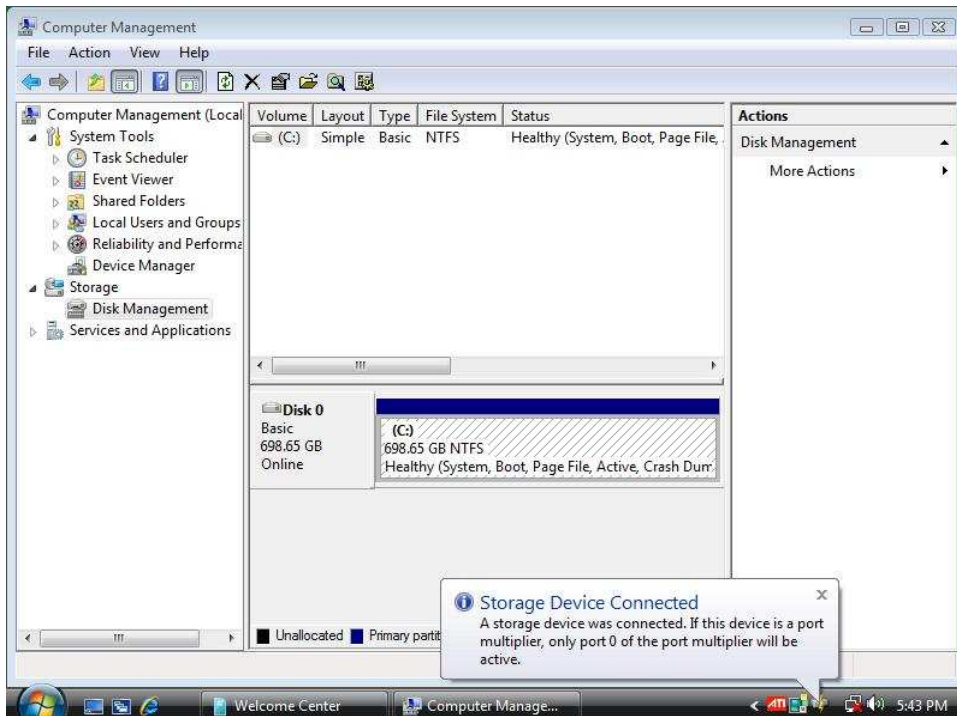
4. After install CentOS 5.2 completely , download your LAN driver by following link.
Link: <http://www.realtek.com/downloads/downloadsView.aspx?Langid=1&PNid=13&PFid=5&Level=5&Conn=4&DownTypeID=3&GetDown=false#2>

5. Please remove the in-box driver and remove the r8169 LAN driver by following command.

```
# cp -p r8168-8.011.00.tar.bz2 ~  
# cd ~  
# tar vjxf r8168-8.011.00.tar.bz2  
# cd /lib/modules/`uname -r`/kernel/drivers/net/  
# rm -f r8169.ko  
# cd ~  
# cd r8168-8.011.00  
# make clean  
# make modules  
# make install  
# depmod -a  
# reboot
```

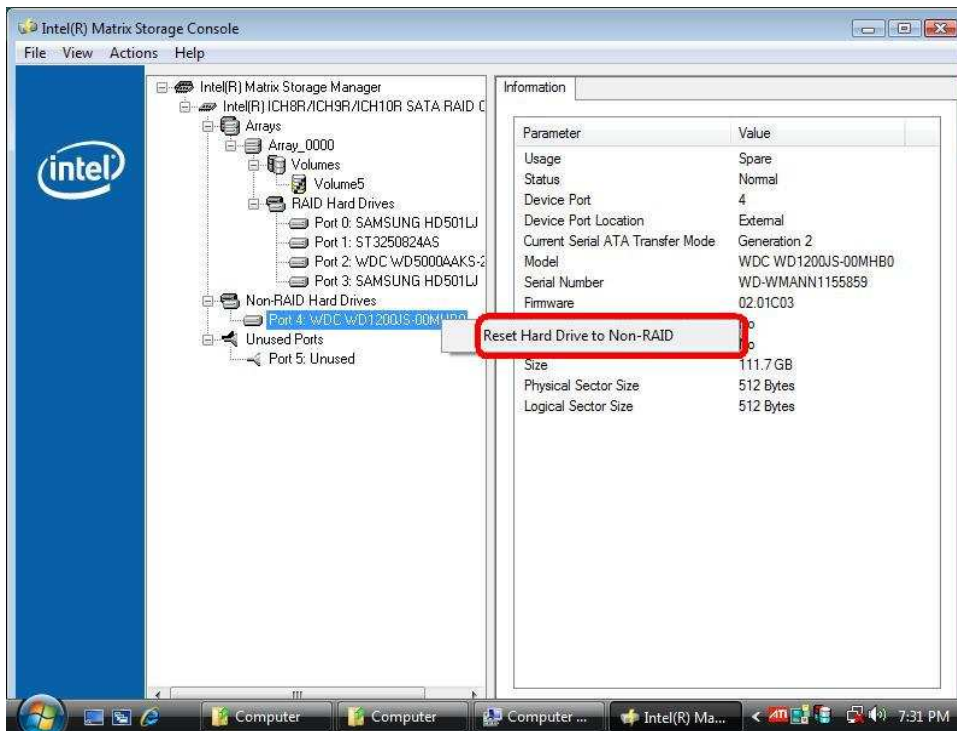
6. After upgrade your LAN driver complete, please reboot your system and enable the Onboard LAN 1 and Onboard LAN 2 in BIOS setting.

2. Q: When I plug in an eSATA HDD, it can be recognized in the BIOS. But in the OS, it will show a message "Storage Device Connected". And I can not use this eSATA HDD, ether. How can I fix it?

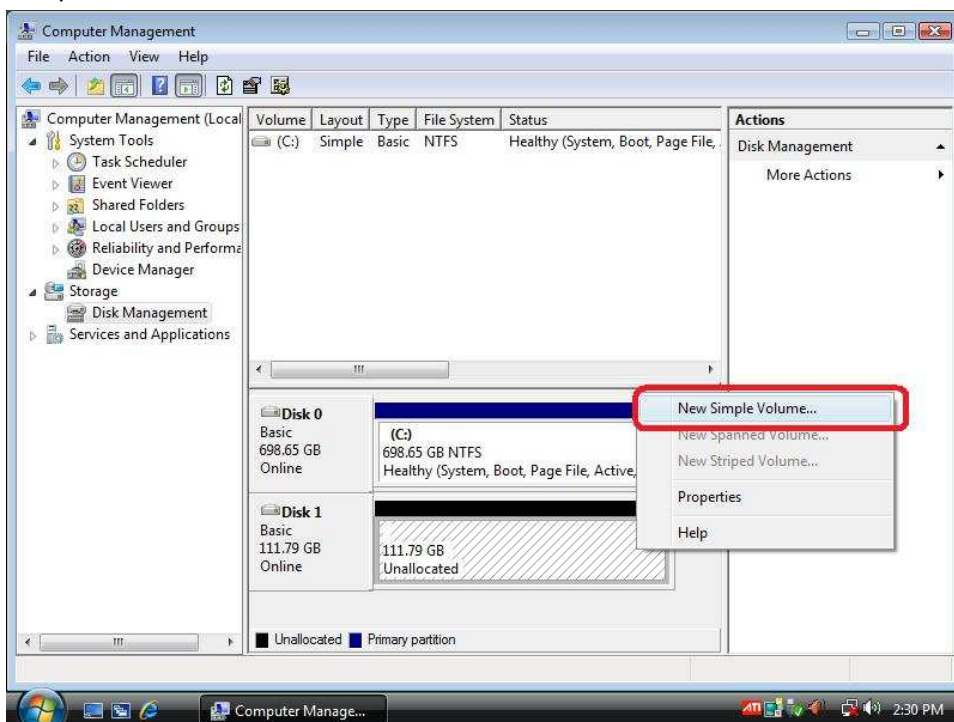


A: Please follow below steps to set:

1. Please enter Intel® Matrix Storage Console, and click the mouse right button on eSATA hard device. And press [Reset Hard Drive to Non-RAID].



2. After setting [Reset Hard Drive to Non-RAID], please restart your computer.
3. Enter to Disk Management, it can recognize your eSATA HDD, please crate a New Simple Volume on it.



4. After that, the eSATA HDD can be recognized.

