

**1. Q: Under Windows 10 version 1511 (Threshold 2 Build 10586), Z170 Extreme6 and Z170 Gaming K6 series models may not resume from Sleep mode (S3) or enter into Hibernation mode (S4) properly.**

**A:** Please visit ASRock Download zone and update the BIOS to the following BIOS or later versions.

Download link: <http://www.asrock.com/support/download.asp>

Model	BIOS Version
Z170 Extreme6+	P1.80
Z170 Extreme6	P1.80
Z170 Gaming K6+	P1.90
Z170 Gaming K6	P1.90

**2. Q: When I try to use 64-bit guest operating systems with VMware, the system pops up "This host supports Intel VT-X, but Intel VT-X is disabled".**

**A:** Please configure "Intel Virtualization Technology" in the BIOS to enable VT-x.

(BIOS -> Advanced -> CPU Configuration -> Set "Intel Virtualization Technology" to "Enabled")

**3. Q: My Beebox which is using a Realtek Wireless LAN card cannot connect to my router with 2.4GHz band.**

**A:** Please update the Realtek Wireless driver (v2023.23.1030.2015) from our website from the link below:

Download link: <http://www.asrock.com/nettop/Intel/Beebox%20Series/?cat=Download>

**4. Q: I've connected a PS/2 mouse to the PS/2 connector on my Intel 100 series platform but it doesn't work.**

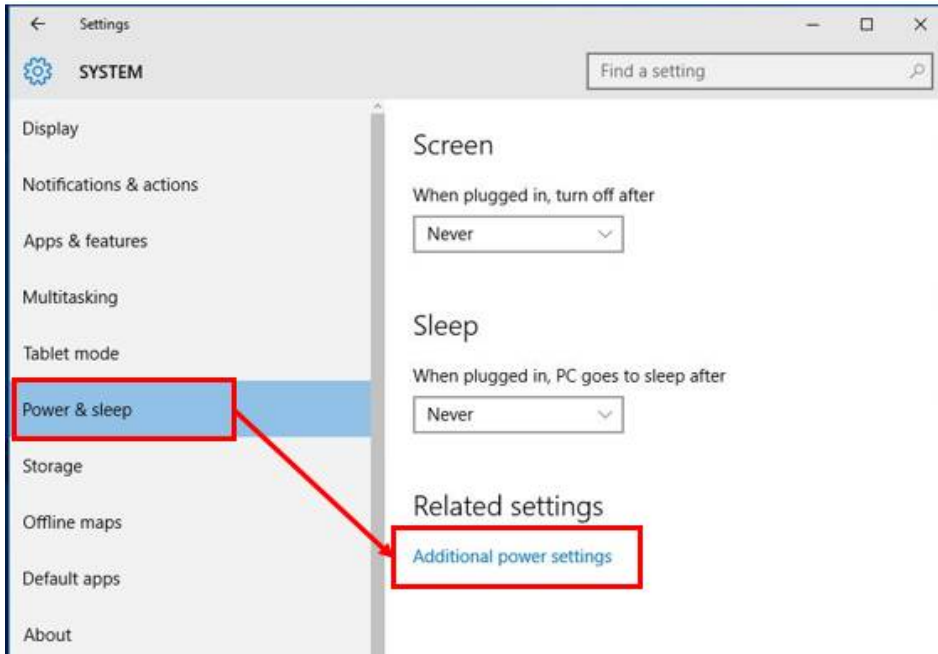
**A:** Please set "PS/2 Y-cable" to "Auto" in the BIOS.

(BIOS -> Advanced -> Super IO Configuration -> Set "PS/2 Y-cable" item to "Auto")

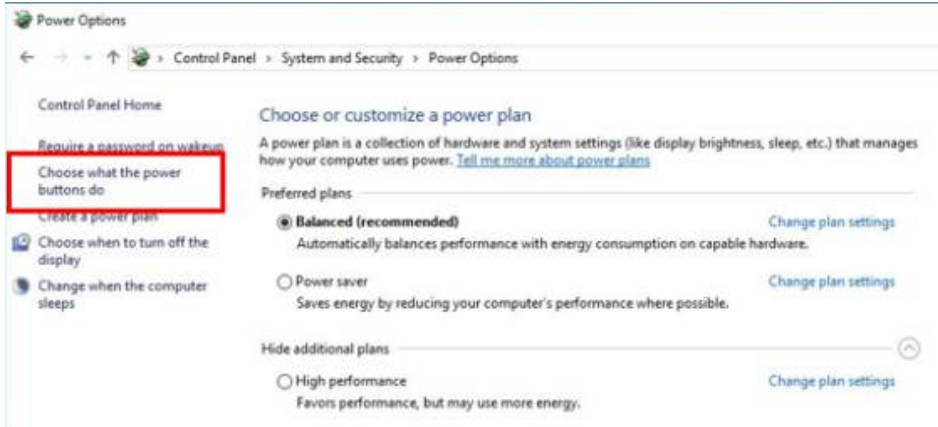
**5. Q: How can I change Windows 10 shut down behavior from Hibernate (S4) to shut down (S5)?**

**A:** Please follow the steps under Windows 10 as below.

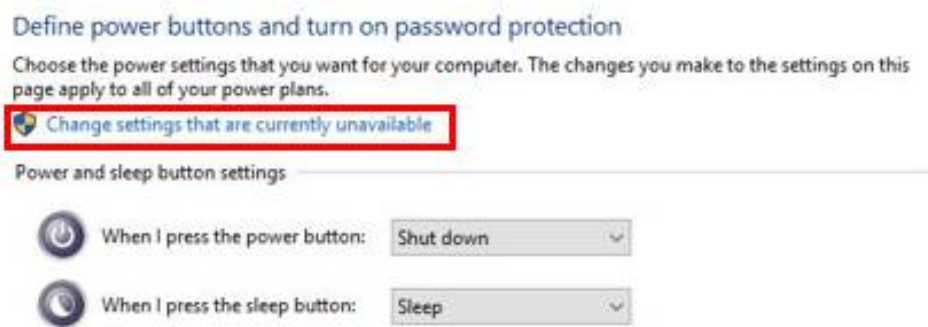
1. Open [System] under Windows 10.
2. Select [Power & sleep] and enter [Additional power settings]



3. Select [Change what the power buttons do].



4. Select [Change settings that are currently unavailable].





5. Uncheck [Turn on fast startup], then save changes.

## Define power buttons and turn on password protection

Choose the power settings that you want for your computer. The changes you make to the settings on this page apply to all of your power plans.

### Power and sleep button settings

-  When I press the power button:  ▾
-  When I press the sleep button:  ▾

### Password protection on wakeup

- Require a password (recommended)**  
When your computer wakes from sleep, no one can access your data without entering the correct password to unlock the computer. [Create or change your user account password](#)
- Don't require a password**  
When your computer wakes from sleep, anyone can access your data because the computer isn't locked.

### Shutdown settings

- Turn on fast startup (recommended)**  
This helps start your PC faster after shutdown. Restart isn't affected. [Learn More](#)
- Sleep**  
Show in Power menu.
- Hibernate**  
Show in Power menu.
- Lock**  
Show in account picture menu.

6. Done.